

Jenkins Journal

LANSDALE, PA

FEBRUARY, 2011

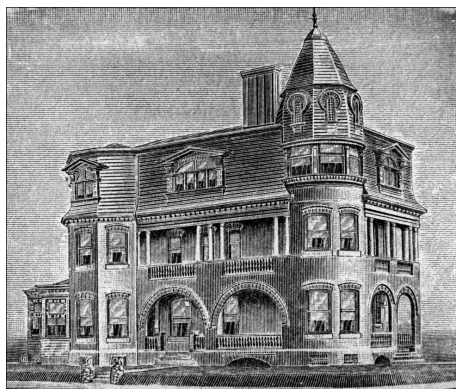
Then and Now-4 on February 8

Many new images show how area changed over the years

Weather permitting – and we say that with a wary eye cast to the skies – the society will resume its Community Programs Tuesday, Feb 8, with the fourth installment of *Then You Saw It, Now You Don't*.

The *Then You Saw It* programs have been among our most popular shows over the years. We take vintage photographs from our archives and re-shoot the pictures from approximately the same location today to illustrate how our landscape has – or in some cases hasn't – changed over the decades.

Photo Archivist Steve Moyer works his magic on more than 100 different scenes in this latest installment of the program. Whenever possible, he masterfully fades in today's image on top of the original, making



THERE'S NO QUESTION this apartment house at Vine and Green Streets retains many of the features shown in a 1906 drawing of the structure when it was a sanitarium.



ing it easy to spot the changes.

More than 500 scenes are included in the four editions of this series. The best of the collection will be produced as a narrated DVD later this year.

The February 8 show begins at 7:30 at the Lansdale Parks and Recreation Building, Seventh St. and Lansdale Ave. There is no admission charge but donations are greatly appreciated.

March 8: Five mayors reminisce

A very special evening of conversation and reflection will take place Tuesday, March 8 at our fifth Community Program of the season.

The society will host *Five Mayors*, a fireside-like chat with the five men who have served as Lansdale's chief executive over the past 40 years.

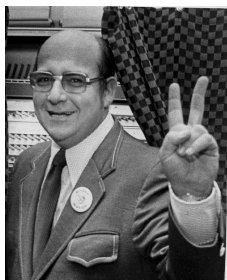
The 7:30 p.m. show will feature former

mayors Hugh Cullen, Richard Bitner, John Scheetz and Michael DiNunzio along with current Mayor Andy Szekely. Darryl Berger, program director of WNPV Radio, will serve as moderator.

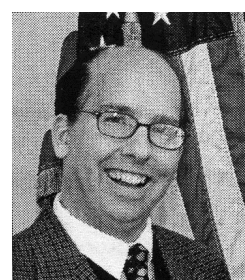
The mayors will have an opportunity to describe their experiences while in office and share what they

consider their greatest successes and biggest disappointments. They will also have a chance to discuss how Lansdale has changed over the years.

In a first for the society, plans call for the mayors to be seated in a conversational-style setting that will be informal and hopefully encourage give-and-take by the participants.



FROM LEFT:
Hugh Cullen,
Richard Bitner,
John Scheetz,
Mike DiNunzio,
Andy Szekely.



First for the society: Tea time in April

The Roaring 20s will be the theme of a spring tea and luncheon on Saturday, April 30 that will benefit the Lansdale Historical Society.

The event will be held at Elm Terrace Gardens, 660 N. Broad St., beginning at 11 a.m.

Highlighting the tea will be *The Fabulous Flapper*, a presentation featuring the fashions of the 1920s by Ellie Laubner, author of *Fashions of the Roaring 20s*, and *Collectible Fashions of the Turbulent 1930s*. Laubner will discuss the clothing, designers and happenings that helped shape that exciting period in history.

Tickets at \$25 per member

(\$28, non-members) will be available at the research center and Chantilly Floral, 29 W. Main St. after March 1. More information will be included in the next *Jenkins Journal*.

The committee organizing the tea is chaired by Marti Drumheller.



Rotating displays coming to museum

Exhibits are a changin' in the research center's museum room beginning this month.

Thanks to the efforts of Don Huntsinger, Pat Rieker and Clarence Kinsey at least one display cabinet will be stocked with fresh material each month, ensuring that there's always something new to be seen.

The majority of the memorabilia will be drawn from the society's vast archives that include books, photographs, maps, newspapers and other

collectibles that have been donated over the years.

Currently, the museum features a display about winters past as well as a collection of 18th and 19th century books. We are in the process of assembling a display on area churches to coincide with Easter as well as a World War II display in conjunction with the *World War II Trunk Show*, scheduled for May 10.

Upcoming later in spring will be a display on area

schools and school items as high school graduation time approaches.

Future issues of the *Jenkins Journal* will include current museum displays information. We invite members and the public to stop in several times a year to see what's new.

If you have any ideas for future displays or items to loan us for display purposes, please call Clarence at (215) 855-1872 with your suggestions.



THE JENKINS HOMESTEAD

Jenkins Homestead and Historical Research Center

•137 Jenkins Ave., Lansdale, PA 19446.

•Hours: Wednesdays, Noon to 5 p.m.; Thursdays, Noon to 5 p.m.; Saturdays, 9 a.m. to noon.

•Telephone: (215) 855-1872; (215) 393-8919 (fax).

•E-mail: info@lansdalehistory.org

•Please send mail correspondence to 137 Jenkins Ave., Lansdale, PA 19446.

•Website: www.lansdalehistory.org.

Election of officers at February program

Because January's Community program was postponed, the society will elect trustees and officers prior to the February 8 show at the Lansdale Parks and Recreation Building.

The entire slate of officers and trustees that served in 2010 has been re-nominated for 2011. It includes:

Richard Shearer, president;

Annette Krimm, vice president, Stephen Moyer, second vice president; Larry O'Malley, third vice president; Janice Bennett, recording secretary; Linda Evans, corresponding secretary, and Anne Scheuring, treasurer.

Trustees: Marti Drumheller, Clarence Kinsey, Pat Rieker, Richard Stricker, Raymond

Walton.

Trustee emeritus: Jane Walton.

* * *

Since the slate of officers could not be announced publicly prior to now, additional nominations will be accepted by phone at (215) 855-1872 through Saturday, Feb. 5.

Trunk show rescheduled for May 10

January's Community Program, *The World War II Trunk Show* featuring Janeal Jaroh was postponed because of snow. It has been rescheduled for Tuesday, May 10 as the final presentation of the 2010-11 season.

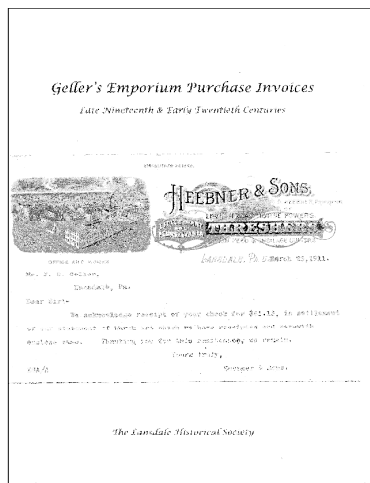
The May date was selected to

avoid the possibility of additional postponements of this show during the winter months. As you will recall, last year our February show had to be rescheduled twice as a result of the snow..

It is the society's policy to err on the side of caution when

it comes to postponements; in other words, we won't hesitate to call off a show if there is a significant threat of inclement weather. A contributing factor is the lack of parking adjacent to the parks and recreation building.

Now available: Geller invoice books



Back at the turn of the 20th century, Jacob Geller's Grand Emporium was THE department store of Lansdale.

Geller, like many other merchants, came to town to take advantage of the railroad junction and the additional commerce that trains and convenient transportation would bring to his business.

His store, located in the building that now houses the Lansdale School of Cosmetology and Wilson's Hardware, was a source of all sorts of goods - from food, to animal feed to coffins to furniture. Geller was a master salesman who depended on large newspaper ads and customer loyalty for his business

success. Geller guaranteed if you wanted something he didn't have in stock, he'd find it for you.

Several decades ago the society was given a huge supply of Geller purchase invoices sent by businesses near and far. About a year ago, we decided to cull the supply, keeping a quantity of ourselves and selling off the rest.

The original supply went quickly but now we've discovered a new cache. Clarence Kinsey and Ruth Madison, who archived the collection, have assembled a limited number of 20-25-page binders that are filled with an assortment of these highly-embossed invoices

(Continued on page 4)

Paid up? 2011 dues deadline is now

Just a reminder that the deadline has arrived for renewing your Lansdale Historical Society membership.

As mentioned in the December newsletter, dues have been increased slightly - \$5 per level of giving - to help offset

increased operating costs and an anticipated hike in postal rates later this year.

While basic dues are set at \$20 for individuals and \$25 for couples, we encourage you to re-up at one of our

higher levels of giving. Every dollar that you donate helps us continue our efforts to preserve the North Penn area's past for future generations to enjoy.

We greatly appreciate your continued support.

Lansdale Historical Society

Membership Application

Year _____

Name: _____

Address: _____

Town: _____ **State** _____

ZIP Code _____ **E-Mail** _____

PLEASE CHECK

INDIVIDUAL: Single \$20 _____ **Couple \$25** _____ **Patron \$40** _____

Sustaining \$55 _____ **Business \$100** _____

LIFETIME: 55 or older (Single) \$300 _____ **(Couple) \$500** _____

Additional Donation \$ _____

Don't Mail Newsletter _____

Make checks payable to: Lansdale Historical Society, 137 Jenkins Ave., Lansdale, PA 19446

Annual banquet a week later - on April 16

Here's an early reminder that the society's annual banquet is coming up Tuesday, April 19 at William Penn Inn, Gwynedd.

As we mentioned in an earlier newsletter, this year's banquet is being held on the third Tuesday of April, not the second Tuesday, as is usually the case. Because of a scheduling conflict the

inn's large banquet room is not available on our normal date.

As usual the highlight of the evening will be the presentation of the annual Edwin G. Holl Historic Achievement Award, given to an individual, business or organization that has done exemplary work in preserving or promoting the history of the North Penn area.

Previous winners of the award have included Richard Allman of the Joseph

Ambler Inn, Richard Stricker, superintendent of the Lansdale Cemetery, Lansdale businessperson Margie Booz, the developers of the Turbo Lofts and the Silk Factory Apartments, and educator Robert Righter.

The banquet will begin at 7 p.m. preceded by a cocktail hour at 6 o'clock.

Reservations information will be included in the next issue of the *Jenkins Journal*.

Geller invoices on sale

(Continued from page 3)

es, each one enclosed in protective sheets. Also included is a brief history of the Geller business.

The binders go on sale this week at \$20 each (one to a customer, please), and they are a bargain at that price. They can be purchased during regular hours at the research center.

Don't miss this chance to own a authentic piece of Lansdale's history.

Clean-up projects planned for spring

Mark down Saturday, April 9 for the society's most important clean-up, fix-up day of 2011. Work will begin at 9 a.m. and we hope to finish by noon.

We're asking members and friends of the society to bring rakes, tarps, trimmers and gloves to help clean up the grounds after what is turning out to be a brutal winter.

We also need assistance cleaning the interior of the research center and the assistance of some able bodies would be appreciated to move portions of our archival collection to new locations.

In recent years, these clean-ups have been sparsely attended but we truly do need your help - for an hour or for the entire morning.

Lansdale Historical Society 137 Jenkins Ave., Lansdale, PA 19446



The Jenkins Historic Complex