

Jenkins Journal

Newsletter of the Lansdale Historical Society

Preserving the past for future generations to enjoy and appreciate.

lansdalehistory.org

July — September 2022

Lansdale, Pennsylvania

Congratulations Lansdale 150

Here at the Historical Society we spend a lot of time telling the story of Lansdale, not just during a major anniversary year but every year, every day of the year actually. So, needless to say, we do get excited when it is a big year, like this year, to celebrate.

We hope you have been able to enjoy the Lansdale 150 events that have happened so far and are looking forward to the remaining ones this year.

50 years ago in 1972 it was Lansdale's 100th anniversary. It was quite the celebration, one we invite you to revisit with us. So many great stories, events and images to remember.



A Retrospective of Lansdale's Centennial in 1972

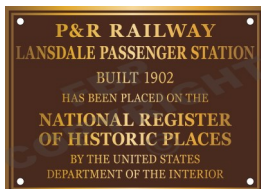
Presented by Steve Moyer

Tuesday August 9, 2022

7:00pm, Lansdale Borough Hall

MARK YOUR CALENDAR

During the past year and a half the Lansdale Historical Society had sponsored the successful efforts to get the Lansdale passenger station on the National Register of Historic Places. To celebrate this significant achievement, with the help of SEPTA, there will be a dedication ceremony at the station on Sunday August 28 at 1pm.



Art Show at the Homestead on Founders Day August 27, 2022

By Helen Schwartz

The Society will present an art show and sale on Saturday, Aug. 27, as our Founders Day event.

Seven artists with local connections will be featured. Paintings will be on display in the Homestead and the Research Center, located at 137 Jenkins Ave., and at a tent on the lawn. The public is invited to stroll through the grounds and tour the buildings while viewing the artwork.

Highlighted at the event will be the artwork of:

EDWIN G. HOLL

1916 – 2005

Aside from being a long-time Pennsylvania Senator, the late Edwin Holl was a man of many talents: outstanding businessman, local community leader, licensed pilot, a colonel in the Civil Air Patrol, accomplished jazz musician – and



Sen. Edward G. Holl in the 1980s

exceptional artist.

Holl grew up on a farm in Bucks County, where “you learn to do just about everything including painting, wood carving and fixing machinery,” he told the *Montgomeryville Spirit* in 1990. “I like both (art and music), but they are very different. Playing a musical instru-

ment is very exacting, especially when playing with an orchestra or band. You have no liberties. Art is done as an individual, when and how you want. You have much greater liberties.”

Holl's artwork will be on display under the outdoor tent, and some of his pieces will be offered for sale by the Society.



ALBERT RUE BAILEY

1882 – 1951

Bailey was a native of Philadelphia and the son of noted sculptor Joseph Alexis Bailly. In his early life Bailey was a commercial artist and later combined sign painting and fine art. He lived on East Fifth Street in Lansdale, where he made his living as a sign



“Road to New Britain” by Albert Rue Bailey. This painting hung in his family's dining room in Lansdale.

painter, according to an article in *The Reporter* in May 2009. Some of his more famous works are the murals on the old carousel at Dorney Park near Allentown and the trademark “His Master's Voice” created for the American manufacturer, Victor Talking Machine Company, later RCA.

Bailey's artwork will be on display at the Museum in the Research Center.

Continue Art Show page 2

Art Show Continued From Page 1

Other featured artists include

JUDITH BOYLES

1938 –

Judith Louise Emmerick Boyles grew up in Hatfield, the daughter of an artist, Ruth Shissler, who encouraged Judy to develop her talent as a child. Following her graduation from North Penn High School in 1956, Judy received formal training as a painter at the Philadelphia Museum of Art.

Judy's passion for painting has been



Judith Boyles shows her painting of the Lansdale passenger rail station

lifelong. She is also interested in local history and has painted four Lansdale landmarks – the passenger rail station, the Hotel Tremont, the Lansdale Theatre and Neiburg's store.

Boyles' artwork will be displayed at the Research Center.



GEORGE LAWSON CLOUSER

1891 – 1971

A machinist with a master's degree in engineering, Clouser was a unique and beloved citizen of Lansdale. He chose to live at his small, untidy workshop at Seventh St. & Cannon Ave. and was known as the "Hershey Bud Guy," for handing out the candies to anyone (mostly to kids). But he was also an artist and often could be seen riding his bike around town with paintbrushes and canvas on board.



George Clouser walking outside his shop at Seventh St. & Cannon Ave.

Clouser sold his paintings but at times would rent them for a dollar a month, having a collection of 280 paintings when he passed.

Clouser's artwork will be on display in the Homestead.



DAVIS GRAY

1929 – 1995

Born in Teaneck, NJ, Davis Gray was the "brush name" for artist Ernest B. Walden who began his work for Gray's Watercolors in 1967. Gray's Watercolors originated in Ringoes, NJ, and was created to provide affordable hand-painted reproductions of familiar "Our Town" scenes to universities and, later, financial institutions. The majority of artists produced paintings under the brush name Gray, and Walden was the first, using the name "Davis Gray," chosen for its resemblance to "Davy's Gray," one of the names of the watercolor color spectrum.



Portrait of Davis Gray; Photo credit: Gray's Watercolors Catalog 1991

A fine arts graduate from Dartmouth College, and an alumnus of the Pennsylvania Academy of the Fine Arts, Gray had a number of watercolor series to his credit. The former First Federal Savings and Loan of Lansdale commissioned Davis Gray to produce a series of watercolors of local scenes in the 1970s.

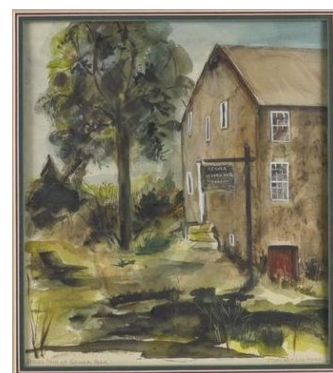
Gray's artwork will be displayed at the Homestead in the Parlor.



MARIAN HAAS

1926 – 2006

Marian Filer was born in Shamokin, PA, where attended and graduated from public schools and excelled as an artist. She studied fine arts and commercial illustration at the Corcoran Gallery School of Art in Washington, DC, and also earned an Associate Degree in Fine Arts from Montgomery County Community College. In 1946, Marian married William Haas, Jr., and they eventually settled in Montgomery Township, PA.



Painting of Myers Mill at Stover Park, by Marian Haas

Marian continued to produce works of art throughout her adult years. She most favored painting landscapes in watercolor, oils, and pastels. In her later life, she would provide an annual art scholarship to a promising graduating art student at Shamokin High School.

Haas' paintings will be on display at the Research Center.

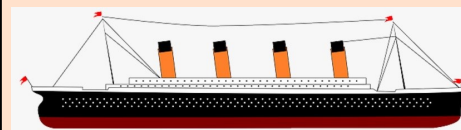
Continue Art Show page 3

Annual Spring Tea

The Historical Society presented its 11th Annual Spring Tea on April 30th at the Lansdale Borough Hall. The theme was "Not Just Peter Rabbit", a story about Beatrix Potter, who wrote the Peter Rabbit series, along with many other things.

About 40 guests enjoyed the tea with door prizes and several baskets raffled. A handmade afghan made by society member Pat Mahoney was also a big hit.

We are all looking forward to next year's tea when the theme will be "Tea Time On The Titanic".



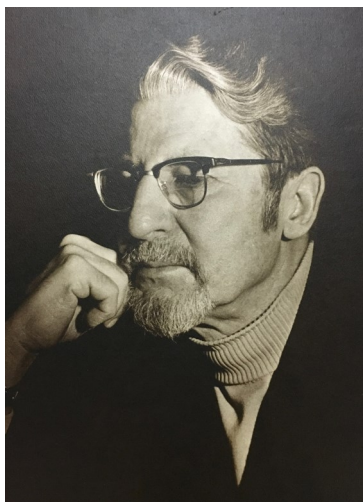
Art Show Continued From Page 2



CHARLES KINTER

1910 – 1995

Charles "Chuck" Kinter was born in a log cabin in Edinboro, PA. He received a master's degree in Education from Penn State in 1942. He also attended the Philadelphia College of Art and the University of Colorado and studied art history through Temple University's European art tour.



Portrait of Chuck Kinter recently uncovered at the Jenkins Homestead

Mr. Kinter taught art and photography in the Hatfield, Upper Merion, Lansdale and North Penn School Districts from 1935 to 1975. Over the years, Mr. Kinter was involved with local and state art and education associations. In addition to teaching, he enjoyed painting, filmmaking and photography.

Kinter's artwork will be displayed at the Homestead.

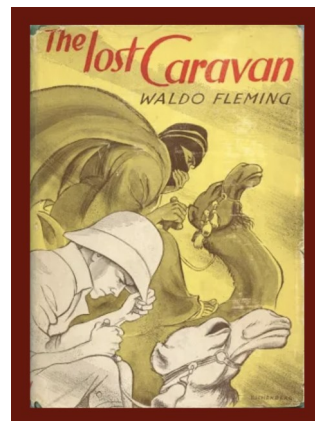


The Book That Survived

By Pat Rieker

The society recently received a copy of *The Lost Caravan* by Waldo Fleming. The book is one of the many so-called "boys' adventures" that enjoyed wide circulation among youths who frequented local libraries in the 1930s-1950s. It's fun to page through such a book from a bygone era, but at first glance, the book did not appear to be connected to Lansdale in any way. It was only when we turned to the inside back cover that the story of this old book became clear. The cover bears the stamp of Main Street Junior High School, and the last due date stamped is in December, 1946. Those who lived in Lansdale at that time will remember the night of December 26, 1946, when a devastating fire destroyed Main Street Junior High School. Fairmount Fire Company was delayed by a long freight train which blocked all the railway crossings in town. Now we know that one book from the school library survived the inferno, safe at home with one of the students.

The *Lost Caravan* lives on in the archives of Lansdale Historical Society, an adventure book that lived through its own adventure!



Picture is of Charles Styer Jenkins and his wife Anna Jackson Jenkins and their grandson James Charles Jenkins. Picture taken at "Penn Monto" pony farm.

were thoroughbreds and he also had a herd of Swiss cattle, one of the few herds of that class in this part of the United States.

He was director of the American Shetland Pony Association and he also served on the school board.

Charles died in 1934 at the age of 80yrs and is buried at Whitmarsh Memorial Park Ambler, Pa.

Charles Styer Jenkins

By Ruth Madison

Charles Styer Jenkins was born in Gwynedd Twp Jan 13, 1854, the great grandson of John Jenkins II. He attended public schools of Upper Gwynedd and Millersville and upon completion of his schooling started to work on the family farm. Then later he bought a tract of land in Towamencin Twp. which he called "Penn Monto" and began breeding ponies. He became well known for breeding and training ponies. His fame as a breeder of ponies was widespread and he shipped to all parts of the United States. His ponies

Lansdale Founders Day - August 27, 2022

Along with our art show here at the homestead grounds during this year's Lansdale Founders Day, we will once again be home to the opening ceremonies for the day, the homestead will be open to tour and we will be hosting two walking tours that have proved popular in the past. These include a tour of the Lansdale Cemetery at 9:00am that will highlight the gravesites of some of the town's pioneer leaders and we will host a walking tour of Whites Road Park at 2:00pm, formerly the site of Edgewood Park, a community recreation park of the late 1800s.

Returning will be many of the popular events from previous Founders Days. Among them: the 'Festival of the Arts' in Memorial Park, a health fair near Railroad Plaza, train rides leaving from the Lansdale train station, live music from a stage near Green and Courtland Streets, games for the kids, food trucks, beer garden, model trains at the firehouse, and, of course, fireworks launched from Memorial Park at sunset.



Lansdale Historical Society

is a 501c3 registered non-profit organization.

137 44 Jenkins Avenue
Lansdale, PA 19446

Phone: (215) 855-1872

Email: info@lansdalehistory.org

Website: www.lansdalehistory.org

Facebook: Facebook/Lansdale Historical Society



The Jenkins Homestead and Historical Research Center

are open to the public

Wednesdays-Thursdays 11 am–3 pm

Saturdays 9:30 am-noon.

Masks Optional

There is no charge for tours of the 1770 home-
stead. Charges may apply for research projects.

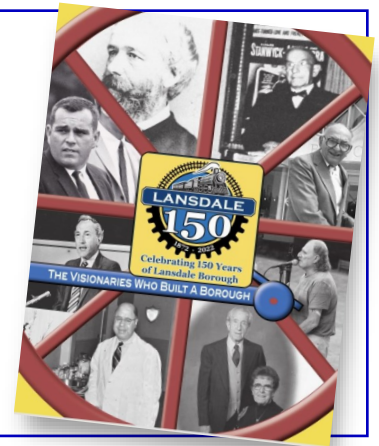
Lansdale 150: The Visionaries Who Built A Borough

This commemorative sesquicentennial volume captures the borough's long and colorful history, recapping Lansdale's significant eras and recounting the stories of some three dozen men and women who shaped the town from its earliest days into today's warm and vibrant community.

This highly collectible book will be available early August at Lansdale 150 & Discover Lansdale events and here at the Lansdale Historical Society.

Books are \$30 each

Ordering information will be available at LANSDALE150.org



Lansdale Historical Society

137 Jenkins Avenue
Lansdale, PA 19446